



Association of Posterior Reversible Encephalopathy Syndrome with Renal Failure

Imran Khan¹, Riyaz Ahmad Bhat^{1*}, Irfan Khan² and Tahir Saleem¹

¹Department of Internal Medicine, Sher-i-Kashmir institute of Medical Sciences, Srinagar Kashmir, India.

²Department of Pathology, Government Medical College, Jammu, India.

Authors' contributions

This work was carried out in collaboration between all authors. Author IK designed the study and prepared the draft. Author RAB collected the data and did analysis and interpretation. Author IK helped in literature search and manuscript review. Author TS helped in data acquisition and manuscript preparation. All authors read and approved the final manuscript.

Article Information

DOI: 10.9734/BJMMR/2015/15501

Editor(s):

(1) Tibor Fulop, Division of Nephrology, University of Mississippi Medical Center, Jackson, USA.

Reviewers:

(1) Fatima Mubarak, Radiology Department, Aga Khan University Hospital, Pakistan.

(2) Hideaki Yamabe, Hirosaki University Hospital, Japan.

Complete Peer review History: <http://www.sciencedomain.org/review-history.php?iid=910&id=12&aid=7920>

Original Research Article

Received 29th November 2014
Accepted 3rd January 2015
Published 28th January 2015

ABSTRACT

Background: Posterior reversible encephalopathy syndrome is a clinico-radiological entity that is characterized by variable associations of seizure activity, consciousness impairment, headaches, visual abnormalities, nausea, vomiting and focal neurological signs. No large data exists on the association of posterior reversible encephalopathy syndrome with renal failure.

Materials and Methods: This case series of five patients was collected to examine the association of two conditions and evaluate outcome. All these patients were enrolled in a tertiary care hospital over a period of two years. No informed consent was sought because the study was merely observational and did not demand deviations from standard.

Results: Four patients presented with acute renal failure and one patient had established End-Stage Renal Disease. All the patients had hypertension at presentation besides other risk factors. All the patients had Magnetic Resonance Imaging documented posterior reversible encephalopathy syndrome. Despite intensive management, two patients did not show any improvement of blood pressure control and died. This observation raises the possibility that renal failure increases mortality in patients with posterior reversible encephalopathy syndrome. However,

*Corresponding author: Email: bhatdriaz@hotmail.com;

our series is limited by small number of enrollees and hence no definite conclusions can be drawn from this observation.

Conclusion: Posterior reversible encephalopathy syndrome should be considered in all those patients who have renal failure and associated neurological abnormalities. The association needs to be taken urgently and seriously.

Keywords: Posterior reversible encephalopathy syndrome; magnetic resonance imaging; renal failure.

1. INTRODUCTION

Posterior reversible encephalopathy syndrome (PRES), characterized by transient neurological symptoms, including headache, altered mental status, seizures and visual impairment, is a well-known condition occurring in some patients hospitalised for acute illness [1]. Neuroradiological study usually shows oedema involving the cerebral posterior regions [1-4]. The most common causes of PRES are hypertensive encephalopathy, preeclampsia, eclampsia, cyclosporine A (CSA) neurotoxicity [5,6]. The distinctiveness of PRES is its reversibility both in terms of the clinical and radiological abnormalities after institution of appropriate treatment and removal of the precipitating factors. Although PRES is reversible once treatment is instituted, delayed diagnosis and therapy can result in permanent brain damage and neurological sequelae, such as chronic epilepsy [1,2]. Most of the literature available on PRES is from case reports and case series. PRES in patients with renal failure is not commonly described in literature. We could not find any large series describing the condition in patients with renal failure. This case series of 5 patients was collected to evaluate the course of disease and evaluate outcome in patients with renal failure.

2. MATERIALS AND METHODS

All the patients were enrolled in a tertiary care hospital over a period of two years. Patients were taken from emergency department, intensive care unit (ICU) and specialty wards. Patient data was collected at the time of admission and during hospital stay. The data collected include patient demographics, clinical characteristics, laboratory parameters which include total leukocyte count, platelet count, kidney function tests, urine examination and cultures. The clinical presentation and laboratory evaluation of the patients is shown in Table 1. PRES was diagnosed by Magnetic Resonance Imaging (MRI) of Brain.

Diagnostic workup and therapy was at the discretion of attending doctor. No informed consent was sought because the study was merely observational and did not demand deviations from standard clinical care. The outcome was defined by clinical and radiological improvement or death.

3. CLINICAL PRESENTATION

All the patients presented with headache, altered sensorium and hypertension. The hypertension in four patients was first time detected and one patient with known end stage renal disease (ESRD) was on suboptimal doses of antihypertensives with poor compliance. Case no 1 was a 34 year old female having ESRD and was on dialysis protocol. She was on suboptimal doses of antihypertensives with uncontrolled blood pressure record. She presented with accelerated hypertension with clinical presentation shown in the Table 1. MRI of the brain showed hyperintense lesions in parieto-occipital regions and was suggestive of PRES (Fig. 1).

MRI Brain

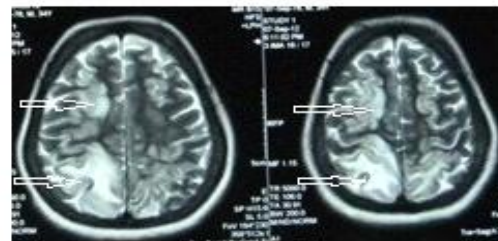


Fig. 1. MRI brain (T2W) showing hyperintense lesions in parietoccipital regions suggestive of PRES

Case no. 2 was a 14 year old boy who presented with generalized tonic clonic seizures (GTCS) and unconsciousness. Patient had high blood pressure, mild renal failure, and active urinary sediment. Patient gave history of upper respiratory tract infections two weeks before. Imaging studies showed hyperintense lesions in

Parieto-occipital and cerebellar regions (Fig. 2). The patient had high C-reactive protein levels besides high antistreptolysin O titers (> 600 units). The clinical presentation, biochemical profile and outcome of other patients is shown in Table 1.

4. LABORATORY EVALUATION

All the patients had renal failure. Two patients had total leukocyte count in the upper range of normal and two patients had leukocytosis. The definite cause of leukocytosis could not be established and cultures were negative. However, these patients were empirically started on antibiotics for presumed occult sepsis. All the patients had MRI documented PRES. Follow up MRI in three patients was normal.



Fig. 2. MRI (FLAIR) image of brain showing hyperintense lesions in parietoccipital regions with significant hyperintensities in cerebellar region

Table 1. Clinical and biochemical characteristics of studied population

Patient data	1	2	3	4	5
SEX/AGE (years)	Female/34	Male/ 11	Female/58	Female/ 22	Male /50
Presentation	Headache, Vomiting, Seizures,altered sensorium (7 days) /Hypertention for 8 years, End stage renal disease on dialysis for 4 years.	Altered sensorium, Generalized swelling of the body, decreased urine output and Headache (2 weeks).	Altered sensorium, Headache and Vomiting (10 days) / chemotherapy 4 years back for breast cancer, in remission.	Fever, Headache, altered sensorium and seizures (5 days).	Headache, altered sensorium, decreased urine output and abdominal pain (5 days) / Hypertention for 6 years
B.P (mmHg)	230/120	170/110	220/110	220/120	180/100
Urine output (ml/day)	200	300	1100	1500	400
Creatinine (mg/dl)	7.8	2.5	3.5	6.4	3.5
UREA (mg/dl)	225	55	95	176	147
Hemoglobin (g/dl)	9.4	11.6	11.3	9.2	10.2
White blood CELLS (×10 ⁹ /L)	10.31	22.8	9.8	14.6	10.2
Platelet count/ mm ³	153,000	318,000	185,000	121,000	123,000
Pyuria	Absent	Positive	Positive	Positive	Absent
Proteinuria	Negative	Negative	Negative	Negative	Negative
Outcome	Improved	Improved	Died	Died	Improved
Follow up MRI	Normal	Normal	Not applicable	Not applicable	Normal

B.P – Blood Pressure; MRI – Magnetic Resonance Imaging

5. MANAGEMENT AND OUTCOME

All the patients were managed in ICU settings. Intensive management was pursued for control of hypertension which included nitroglycerine infusion, Intravenous (I.V) Labetolol (SOS) and oral antihypertensive agents. Four patients (case no 1, 3, 4 and 5) were empirically started on antibiotics as septic screen revealed sterile cultures. The cause of sepsis was presumed to be occult. Two patients (case no 2 and 5) received I.V diuretics in addition. Three patients [1,2,5] improved fully clinically and radiologically. Two patients required ventilatory support and died even after intensive management.

6. DISCUSSION

PRES has been frequently associated with hypertensive emergencies, pre-eclampsia and treatment with immunosuppressive drugs. Less common causes include uremia, digitoxin toxicity and dialysis disequilibrium [7,8]. The association of PRES and renal failure has been reported in few case reports only [9,10]. No large data exists on this association. We report this first case series of PRES associated with renal failure. The presentation of PRES, its association with renal failure, course and outcome was studied. The reversibility of the syndrome was confirmed both clinically as well as by neuroimaging studies in three cases. In the rest of two cases, course of illness was complicated by severe sepsis and septic shock. Both patients died within 48 hrs of admission. The likely cause of PRES in our patients was accelerated hypertension and uremia. The cause of renal failure in three patients was thought to be due to hypertension and occult septicemia. In one patient (case no 2) however, renal failure was likely due to acute glomerulonephritis (postinfectious) and hypertension.

All the patients had hypertension at presentation. Four patients presented with acute renal failure and one patient had established ESRD. Two patients were managed in ICU and developed resistant hypertension with severe sepsis syndrome. Hypertension and sepsis was well controlled in other three patients and all three patients recovered fully. It was therefore observed that control of hypertension, aggressive treatment of infection and supportive care contributes towards favorable outcome.

The favored pathogenic theory for PRES suggests auto regulatory disturbance with

hyperperfusion, resulting in the shifting of fluid from the intravascular compartment and consequent vasogenic edema [2]. It is unknown why the posterior circulation is preferentially affected. A possible explanation is the lower sympathetic innervation of posterior cerebral arterial circulation, with a consequent reduced auto regulation of already impaired cerebral areas [11]. Acute renal failure otherwise carries high mortality and morbidity [12,13]. Further studies are needed to know whether increased mortality is due to complications by renal failure and uremia or combinations of two conditions per se.

The PRES presenting in renal failure with varied presentation and in different age groups suggests that the syndrome should be kept in the differential diagnosis of patients presenting with altered sensorium, seizures and hypertensive crisis irrespective of age. It will greatly help in patient management and better outcome. This study signifies that although PRES is a reversible entity but when complicated by conditions like renal failure, resistant hypertension or sepsis, condition may prove fatal.

7. CONCLUSION

In conclusion, renal failure increases mortality in patients with posterior reversible encephalopathy syndrome. Furthermore, posterior reversible encephalopathy syndrome should be considered in all those patients who have concomitant presence of renal failure and neurological manifestations.

ETHICAL APPROVAL

This study was approved by the local ethical committee of institute. No informed consent was sought because the study was merely observational and did not demand deviations from standard clinical care.

COMPETING INTERESTS

Authors have declared that no competing interests exist.

REFERENCES

1. Hinchey J, Chaves C, Appignani B, Breen J, Pao L, Wang A, et al. A reversible posterior encephalopathy syndrome. *N Engl J Med.* 1996;334:494-500.

2. Kwon S, Jahoon K, Sangkwon L. Clinical spectrum of reversible posterior leukoencephalopathy syndrome. *Pediatr Neurol.* 2001;24:361-64.
3. Covarrubias DJ, Luetmer PH, Campeau NG. Posterior reversible encephalopathy syndrome: Prognostic utility of quantitative diffusion-weighted MR images. *Am J Neuroradiol.* 2002;23:1038-48.
4. Casey SO, Sampaio RC, Michel E, Truwit CL. Posterior reversible encephalopathy syndrome: Utility of fluid-attenuated inversion recovery MR imaging in the detection of cortical and subcortical lesions. *Am J Neuroradiol.* 2000;21:1199-206.
5. Servillo G, Striano P, Striano S et al. Posterior reversible encephalopathy syndrome (PRES) in obstetric critically ill patients. *Intensive Care Med.* 2003;29:2323-26.
6. Sheth KN, Wu GF, Messe SR, et al. Dialysis disequilibrium: Another reversible posterior leukoencephalopathy syndrome? *Clin Neurol Neurosurg.* 2003;105:249-52.
7. Kwon S, Jahoon K, Sangkwon L. Clinical spectrum of Reversible Posterior Leukoencephalopathy syndrome. *Pediatr Neurol.* 2001;24:361-64.
8. Covarrubias DJ, Luetmer PH, Campeau NG. Posterior reversible encephalopathy syndrome: Prognostic utility of quantitative diffusion-weighted MR images. *Am J Neuroradiol.* 2002;23:1038-48.
9. Jorge S, Lopes JA, De Almeida E, Martins Prata M. Posterior reversible encephalopathy syndrome (PRES) and chronic kidney disease. *Nefrologia.* 2007;27:650.
10. Burrus TM, Mandrekar J, Wijidicks EF, Rabinstein AA. Renal failure and posterior reversible encephalopathy syndrome in patients with thrombotic thrombocytopenic purpura. *Arch Neurol.* 2010;67:831-4.
11. Schwartz RB, Feske SK, Polak JF, et al. Preeclampsia-eclampsia: Clinical and neuroradiographic correlates and insight into the pathogenesis of hypertensive encephalopathy. *Radiology.* 2000;217:371-76.
12. Xue JL, Daniels F, Star RA, Kimmel PL, Eggers PW, Molitoris BA, et al. Incidence and mortality of acute renal failure in Medicare beneficiaries, 1992 to 2001. *J Am Soc Nephrol.* 2006;17:1135-42.
13. Levy EM, Viscoli CM, Horwitz RJ. The effect of acute renal failure on mortality: A cohort analysis. *JAMA.* 1996;275:1489-1494.

© 2015 Khan et al.; This is an Open Access article distributed under the terms of the Creative Commons Attribution License (<http://creativecommons.org/licenses/by/4.0>), which permits unrestricted use, distribution, and reproduction in any medium, provided the original work is properly cited.

Peer-review history:

The peer review history for this paper can be accessed here:
<http://www.sciencedomain.org/review-history.php?iid=910&id=12&aid=7920>